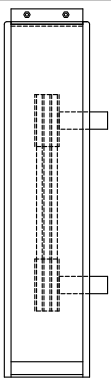


SHAFT OPTIONS

" C DRIVE"
(STANDARD)

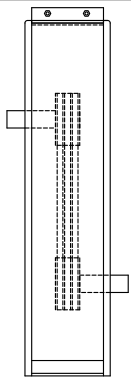
C1



SIDE VIEW

" Z DRIVE"

Z1



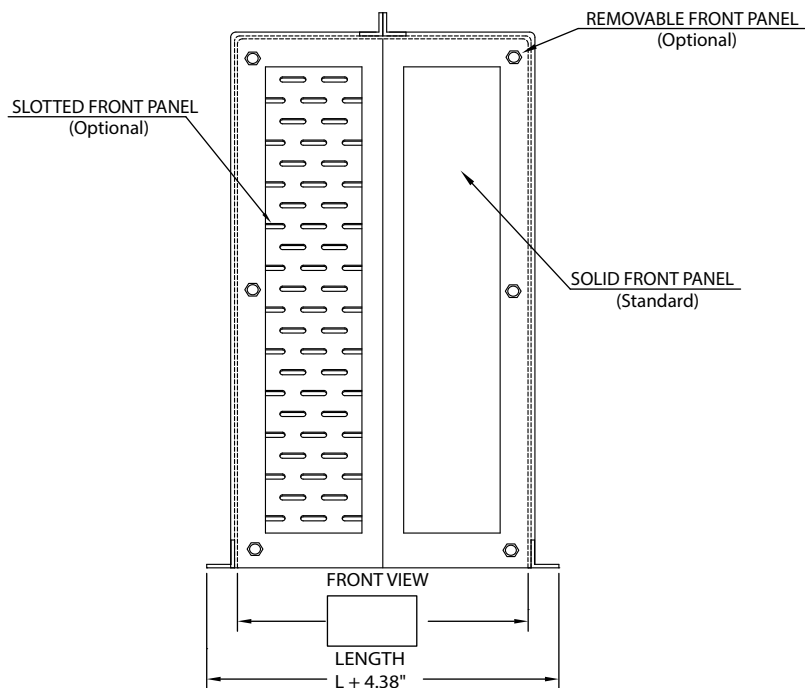
SIDE VIEW

UNIGUARD "VBG" SIZING CHART VERTICAL BELT GUARD

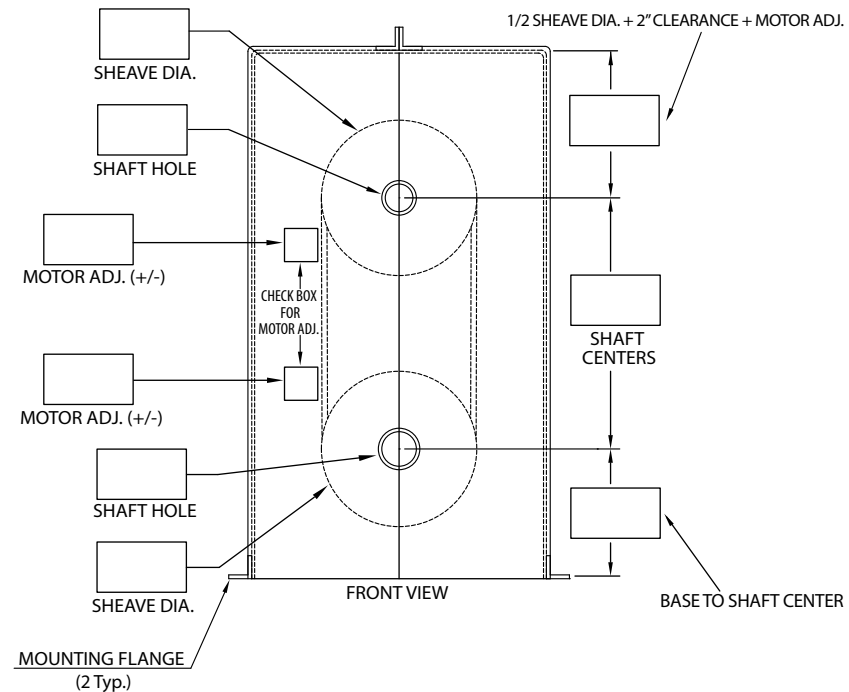
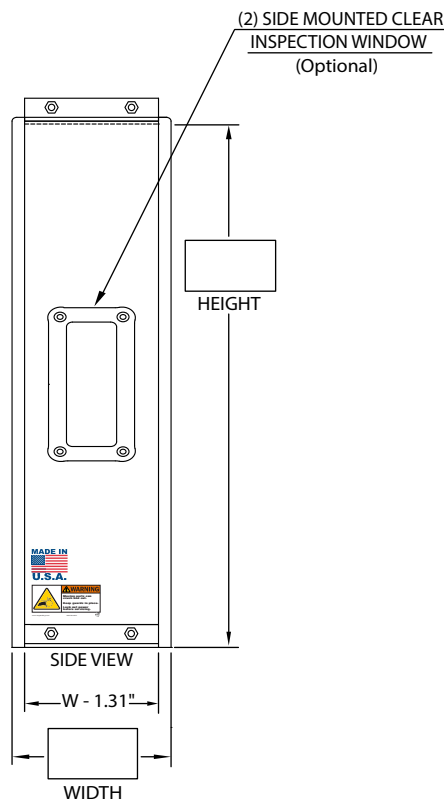
- ALL CUSTOM ORDERS REQUIRE DRAWING OR COMPLETED SIZING CHART
- ALL INSPECTION WINDOWS ARE OPTIONAL
- ALLOW MINIMUM 1/4" CLEARANCE AROUND SHAFT, SHAFT HOLES ARE ACTUAL SIZES
- ALLOW MINIMUM 2.00" CLEARANCE AROUND ALL ROTATING COMPONENTS
- IF SHAFT HOLES ARE TO BE LEFT BLANK ENTER "0"
- DEFAULT FRONT PANEL IS SOLID
- SELECT VSA OPTIONS FOR VERTICAL SHAFT ADJUSTMENT (+/- 1.50" Typ.)
- YELLOW MATERIAL IS AVAILABLE UPON REQUEST
- LENGTH = LARGEST SHEAVE + 2" CLEARANCE ON EACH SIDE
- HEIGHT = 1/2 TOP SHEAVE + TOP SHEAVE MOTOR ADJUSTMENT + SHAFT CENTERS + LOWER SHAFT FROM BASE

OPTIONS

- EQUIPMENT #
- SLOTTED FRONT PANEL SLOTTED
- TOP WIDTH PANEL SLOTTED
- DEPTH WIDTH PANEL
- REMOVABLE FRONT PANEL
- LIFT HANDLES
- TOP WIDTH INSPECTION WINDOW
- 2 SIDE INSPECTION WINDOW
- SPLIT FLANGE BACK 1/4 HDPE
- SPLIT FLANGE BACK 9/16 HDPE
- FIELD MODIFY



(2" WHEN WIDTH IS >= 48" AS SHOWN, 1.25" WHEN 48" OR LESS.)



**** All required fields are marked in red ****

Notes:			
Eq. Mfg.:	End User Company:	Eq. Mfg.:	Qty:
Model:	End User Contact Name:	Model:	Equip Numbers:
Notes:	Notes:	Notes:	Equip Numbers:
Notes:	Notes:	Notes:	Equip Numbers:

Uniguard™ Machine Guards
1115 Pleasant Ridge Road
Greensboro, N.C. 27409
(888) 549-4622
sales@uniguardmgc.com



Uniguard Customer Name:		End User Company:	
Uniguard Contact Name:		End User Contact Name:	
Phone #:	Date:	Notes:	Notes:
EMail:		Notes:	Notes: